

DURALIFE™ SQUEEGEES

Extra solvent-resistant, molded or cut-edge blades made in the United States and abroad to Saati's specifications, Duralife squeegees are available as either a cast blade made in individual cavity molds or as a precision cut-edge. Manufactured with our exclusive urethane formulation that locks in abrasion resistance. Duralife squeegees hold up longer on press and resist softening, including UV and conventional solvent applications. Duralife will not be affected adversely by humidity, or harden in storage. Choose from eight color-coded durometers, from extra soft to extra hard.

CUT-EDGE SQUEEGEES

Duralife's precision cut-edge offers the optimal sharp edge yielding the finest in print definition. Unlike rotary cut edges that leave a serrated pattern on the edge; our one-stroke cut leaves a perfect print edge.

CE SERIES

- ◆ Premium cut edge
- ◆ Good UV performance
- ◆ Close tolerance on hardness range
- ◆ Good all around performance
- ◆ Available in all sizes

TRIPLE-DURO DURALIFE III

The triple-duro blade offers two print edges by sandwiching a harder 90 duro center within the desired print durometer on each side controlling and minimizing the degree of squeegee flex. This reduced flex yields better print definition and better control of ink deposit by maintaining an effective print angle. The harder center also resists solvent attack over a single durometer blade thus maintaining rigidity throughout the production run. The triple-duro squeegee is especially suited for use on higher tension screens in small to medium formats requiring a more stable and rigid squeegee blade and also on automatic presses to maintain the critical print angle across the entire width in large format printing. In addition, with the squeegee pressure focused on the print edge, less overall pressure is needed reducing abrasion and solvent attack to the squeegee and preventing premature stencil breakdown.

Available in four standard durometers: 65/90/65, 70/90/70, 75/90/75 and 85/90/85. Color-coded for easy reference.



SQUEEGEES & ACCESSORIES

MOLDED-EDGE SQUEEGEES

The individual cavity molds assure consistent and uniform blade thickness, dimensions and hardness. Duralife's molded blade maintains its print edge and resists nicking, especially our V-shape (double beveled). Unlike some cut "Vs" that can be irregular, our 60-degree angle is always precise and consistent.

ME SERIES

- ◆ Premium molded edge
- ◆ UV & abrasion resistant
- ◆ Extended press life
- ◆ Resists nicking
- ◆ Sealed walls resist solvent attack
- ◆ Custom sizes available

DUAL-DURO DURALIFE II

Our "Dual-Duro" stacks a one and a half-inch 85-90 duro shaft on top of a half-inch printing edge (55-80 duro), so you can print with both edges. You'll reduce flexing and maintain a more consistent squeegee angle. Print with less pressure for longer stencil life. Duralife dual-durometer blades are available in rectangular, double bevel and ballnose profiles of 2" x 3/8" x 6'.

COMPOSITE DURALIFE CP

Unlike other composites, ours mold a fiberglass reinforcement shaft (setback half-inch from the bottom) in the center of the polyurethane squeegee to prevent flexing. This provides maximum control of the squeegee printing parameters to improve your print quality. You'll print with virtually no squeegee angle or pressure changes throughout the run. Constant adjustments on press are eliminated. Duralife composite squeegees allow the use of a softer durometer, while maintaining a sharp and consistent angle of attack and pressure throughout the print run. The fiberglass reinforcement prevents the squeegee pressure from continually bending the blade.

It enables printing with less squeegee pressure for longer stencil life. The rigidity of the blade also resists waving in the holder. Therefore, unnecessary sharpening is eliminated, and insertion into the holder is fast and accurate.

COMPOSITE SQUEEGEES ARE AVAILABLE IN 55, 65, 70, 75 AND 80 DUROMETERS WITH A RECTANGULAR PROFILE OF 2" X 3/8" X 6'. CUSTOM ORDER, CUT-TO-SIZE LENGTHS AVAILABLE; MINIMUM REQUIRED.

DURALIFE SQUEEGEES ARE AVAILABLE IN MORE THAN 200 SIZES AND PROFILES TO FIT ANY PRESS HOLDER (DOMESTIC OR INTERNATIONAL).

SQUEEGEES & ACCESSORIES

DURALIFE SQUEEGEES SPECIFICATIONS

SHAPE	H	W
RECTANGULAR	3/4"-2"	3/16"-3/8"
RECTANGULAR DUAL-DUROMETER	2"	3/8"
RECTANGULAR COMPOSITE	2"	3/8"
V-SHAPE	3/4"-2"	3/16"-3/8"
BALLNOSE (ROUNDED EDGE)	2"	3/8"

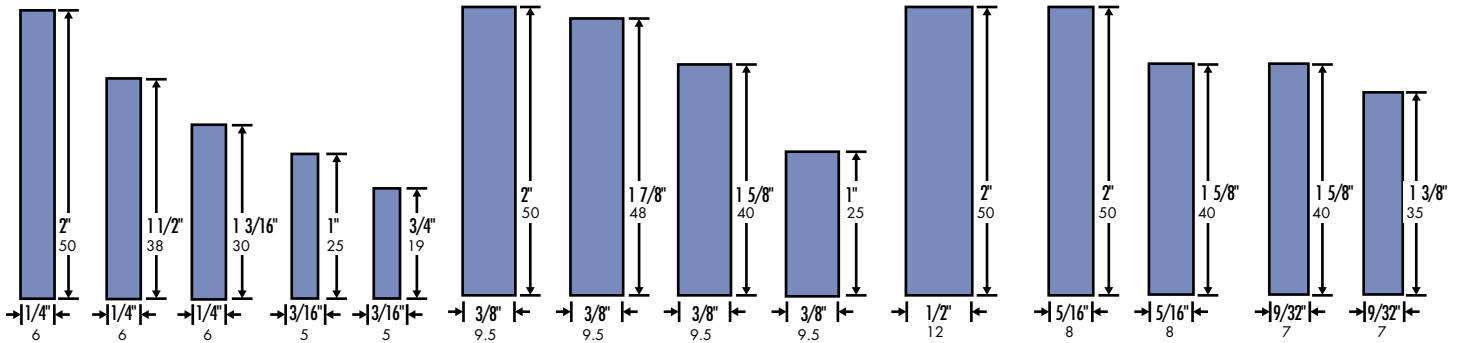
DURALIFE HARDNESS CHART

HARDNESS	DUROMETER
extra soft	55
soft	65
medium	70
medium hard	75
hard	80
very hard	85
extra hard	90

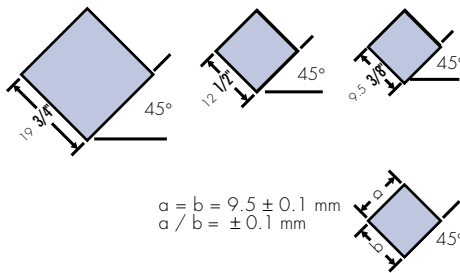
DURALIFE ME & CE SQUEEGEE BLADES

COLOR	DUROMETER
clear	55
orange	65
blue	70
white	75
red	80
lt. blue	80
pink	85
dark orange	90

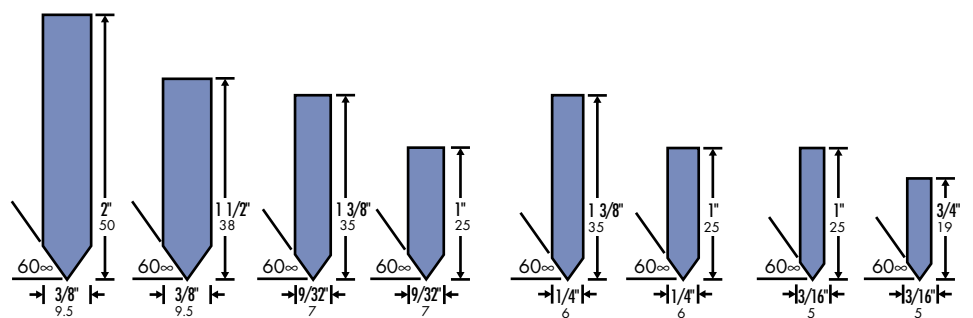
RECTANGULAR PROFILES



DIAMOND PROFILES



SPECIAL PROFILES

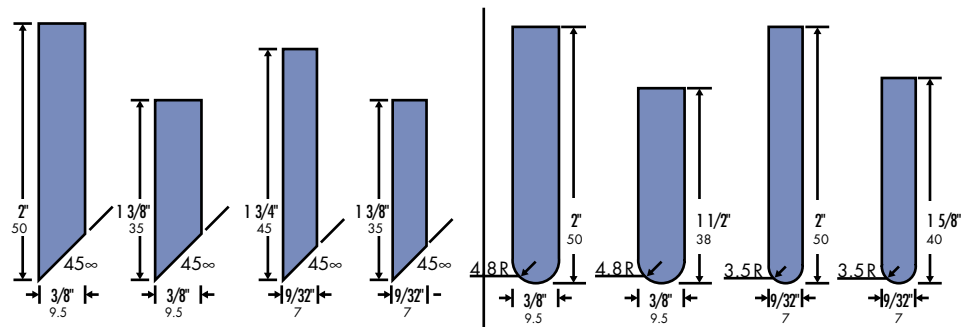


V - Double Bevel

CUT-TO-SIZE SQUEEGEE LENGTHS

Ready-to-use Duralife Squeegees cut to the exact length you need. Our cut-to-size squeegees save production time and simplify storage as well.

QUANTITY DISCOUNTS ARE AVAILABLE. PLEASE INQUIRE FOR MORE DETAILS.



Single Bevel

Ball Nose

ALL SQUEEGEE IS SUBJECT TO AVAILABILITY. OTHER ANGLES AND PROFILES ARE AVAILABLE. CALL 1-800-431-2200 TO INQUIRE.

TRIPLE DUROMETER PROFILES

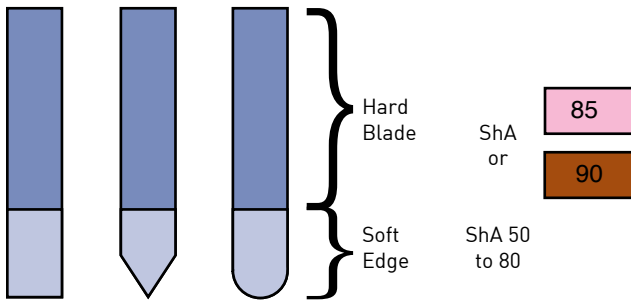


- RECTANGULAR EDGE**
- ◆ Excellent ink shear and better control of ink deposit
 - ◆ Two softer print edges with harder center that resists flexing
 - ◆ Reduces need for excessive squeegee pressure
 - ◆ Maintains consistent print angle
 - ◆ 3/8" Standard profile.

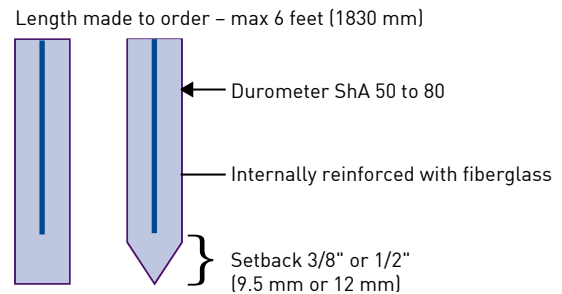
PLEASE CALL FOR ADDITIONAL SIZES.

AVAILABLE IN SHORE A HARDNESS RANGE OF 65/90/65, 70/90/70, 75/90/75 AND 85/90/85.

DUAL DUROMETER PROFILES



COMPOSITE PROFILES



DURALIFE II DUAL-DUROMETER BLADES



DURALIFE III TRIPLE-DUROMETER BLADE

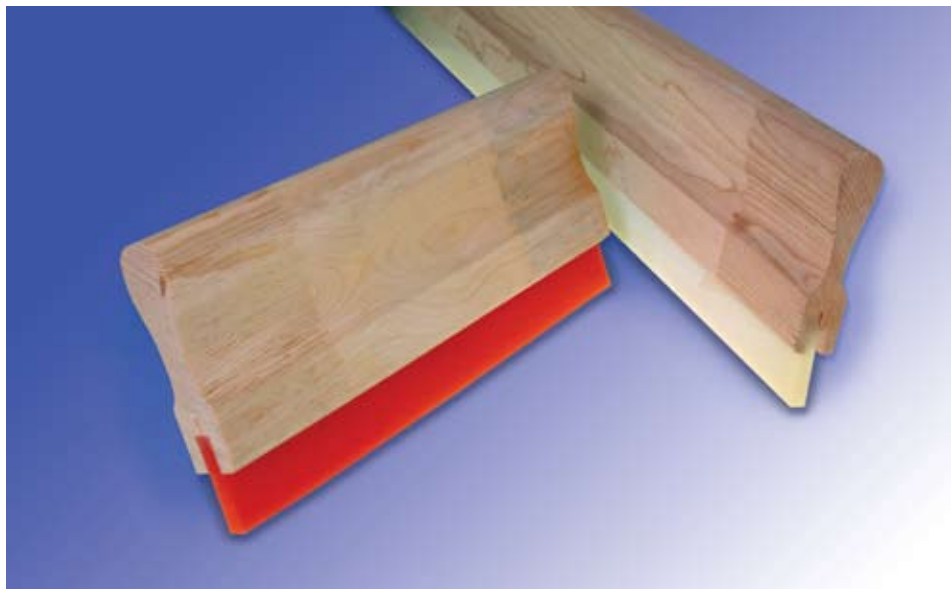


DURALIFE COLOR-CODED BLADES

DURALIFE ASSEMBLED SQUEEGEES

Standard squeegee size/profiles/hardnesses available in high-profile wooden holders are 2" H x 3/8" W in 4", 14", 16", 18" and 6' L rectangular and ballnose (rounded edge) in 60, 65, 70, 75, 80 and 85 durometers. Other combinations available by special order.

Any 2" H x 3/8" W x 6' L Duralife product may be ordered assembled in our high-profile wooden holder.



A VARIETY OF ASSEMBLED SQUEEGEES/HANDLE COMBINATIONS ARE AVAILABLE

HIGH-PROFILE WOODEN SQUEEGEE HANDLE

The handle is curved for easy two-hand maneuvering. Jumbo handle profile available in 4 1/2 inch size for additional comfort. We recommend post screws every 4 inches- available separately.

AVAILABLE IN HEIGHTS OF: 4 1/2" H X 1" W X 6' L
3 1/4" H X 1" W X 6' L



LOW, HIGH AND JUMBO WOOD HANDLE PROFILES AVAILABLE ASSEMBLED OR HANDLE ONLY

TECH TIP: CHOOSING YOUR SQUEEGEE
To maximize solvent resistance, always use the hardest durometer that is practical for the particular job. The harder the squeegee, the more dense the urethane is and therefore the stronger the chemical resistance. FOR MORE INFORMATION ON SQUEEGES SEE TECH TIPS ON PAGE 75

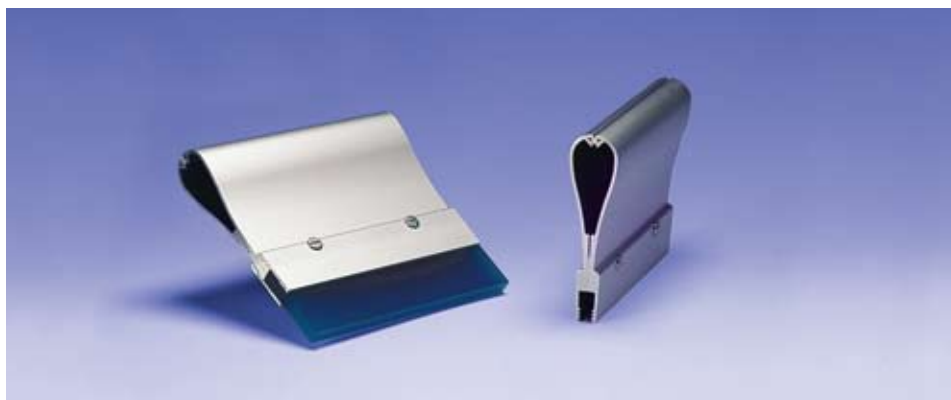
MAGI-GRIP™ HIGH-PROFILE ALUMINUM SQUEEGEE HANDLE

The Magi-Grip is a classic, precision-extruded aluminum squeegee holder, curved for easy handling in manual screen-printing. The 4 1/2-inch high profile offers a convenient grip. The aluminum holder will not absorb and retain solvents.

In addition, its corrosion-resistant, anodized finish makes cleanup easy. Ink residue easily wipes clean.

There is no drilling of the squeegee blade required. Ridges inside the holder opening help grip the squeegee firmly with even pressure and without piercing the blade or distorting it between the ribbed aluminum. Thus, it is held perfectly straight and flat, with a uniform amount of squeegee blade extending from the holder.

The Magi-Grip is pre-drilled and supplied with screws positioned



The Magi-Grip is curved for easy handling, assembles effortlessly and will not absorb and retain solvents

every 3-inches. To use, simply loosen the screws, insert the squeegee and re-tighten the screws.

The Magi-Grip can be used with any squeegee 3/8 of an inch (9.5 mm) thick, including rectangular (standard, dual-durometer or composite), "V" shape or ballnose (rounded edge).

ASSEMBLED MAGI-GRIP™

Any 2" H x 3/8" W x 6' L Duralife may be ordered assembled in our Magi-Grip high-profile aluminum holder.

AVAILABLE FROM STOCK IN CUT-TO-SIZE LENGTHS UP TO 118 INCHES.